






**Definition of terms:**

- ➔ **Surface rehabilitation:** Reworking or renewing, respectively, of aged, worn, rough or porous surfaces, before cracks and subsequently potholes can develop due to freeze-thaw cycles.
- ➔ **Cracks:** Up to 5 mm wide gaps caused by thermal or mechanical, respectively, stresses on concrete or asphalt surfaces, respectively. Essentially, there is a distinction between longitudinal, transverse and alligator cracks.
- ➔ **Potholes:** Fractured or broken areas in the road surface caused by freeze-thaw cycles.
- ➔ **Joint:** Interruption of components as a preventive measure against stress cracks, which may occur due to manufacture or use, respectively. These cracks are caused by different expansion and drying properties of the materials used. Forces resulting therefrom are absorbed by the joint sealing compound.
- ➔ **Seam:** Contact point/flank between two asphalt surfaces upon sheet-type installation of roller-compacted asphalt with comparable properties ("hot on cold").
- ➔ **Connection:** Contact point/flank between two asphalt surfaces with different properties (e.g. mastic asphalt on bituminous concrete), or in the transition area from asphalt to components made of concrete, natural stone, metal, etc.

**Notes on processing:**

-  Machine-aided processing
-  Manual processing
-  Cold workable
-  Hot workable
-  Protect product against frost!



**BORNIT®-Road Construction Compass**

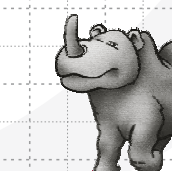
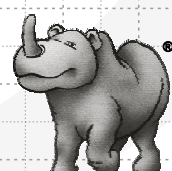


**The new product finder - To help you find exactly what you need!**

**Product overview / Applications:**

	Surface rehabilitation	Crack rehabilitation	Joints / Seams / Connections	Pothole rehabilitation
BORNIT®-Bitumen-emulsion C60B5-REP	<input checked="" type="checkbox"/>			
BORNIT®-Asphalt Pore Sealer	<input checked="" type="checkbox"/>			
BORNIT®-Reactive-Asphalt 20	<input checked="" type="checkbox"/>			
BORNIT®-Asphalt Repair Mortar RE 30 / RE 50	<input checked="" type="checkbox"/>			<input checked="" type="checkbox"/>
BORNIT®-Crack Flex		<input checked="" type="checkbox"/>		
BORNIT®-Crack Compound H		<input checked="" type="checkbox"/>		
BORNIT®-Crack Tape CSA		<input checked="" type="checkbox"/>		
BORNIT®-Joint Tape			<input checked="" type="checkbox"/>	
BORNIT®-Hot Sealing TL			<input checked="" type="checkbox"/>	
BORNIT®-Cold Sealing Compound / -Cold Joint Sealant			<input checked="" type="checkbox"/>	
BORNIT®-Joint Flex			<input checked="" type="checkbox"/>	
BORNIT®-Asphalt-Fix				<input checked="" type="checkbox"/>
BORNIT®-Mastic Asphalt				<input checked="" type="checkbox"/>
BORNIT®-Coldmix Asphalt				<input checked="" type="checkbox"/>
BORNIT®-Reactive-Asphalt 40/80				<input checked="" type="checkbox"/>

Your specialist dealer:







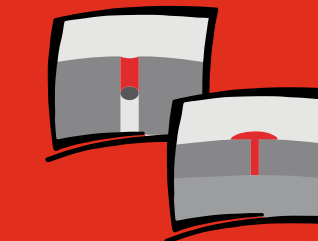
# SURFACE REHABILITATION



# CRACK REHABILITATION



# POTHOLE REHABILITATION



# JOINTS / SEAMS / CONNECTIONS

For closing pores in porous, aged asphalt surfaces (without adding to the height):



**BORNIT®-Asphalt Pore Sealer** - ready-to-use, solvent-free bitumen slurries with mineral additives, easy-to-process, quick-drying.



**BORNIT®-Bitumenemulsion C60B5-REP** - bitumen emulsion with fast breaking and setting behaviour in contact with high-grade chippings, solvent-free; following spraying, depending on the application, immediately spread suitable high-grade chippings.



For asphalt repairs with low layer thicknesses:

Layer thicknesses up to 10 mm



**BORNIT®-Reactive Asphalt 20** - cold mixes reactively curing with water, repaired surfaces immediately traversable following application and compaction; no subsequent compaction by rolling traffic required – very well suited for repairs of driveways, pavements and parking lots.



Layer thicknesses up to 30 mm



**BORNIT®-Asphalt Repair Mortar RE 30 / RE 50** - quick-drying, 3-component repair compound, traversable after 30 minutes already.



For rehabilitation of open seams and cracks in asphalt road construction:



**BORNIT®-Crack Tape CSA** - polymer bitumen tape for fast and easy crack rehabilitation, asphalt mixes may be directly applied thereon, crack-bridging and easy-to-use. Priming with BORNIT®-Bitumen Primer Spray.



**BORNIT®-Crack Flex** - highly flexible polymer bitumen repair compound, solvent-free, weather- and UV-resistant, elastic after thorough drying, crack-bridging and highly adhesive at the substrate. Spreading of 2/5 high-grade chippings required.



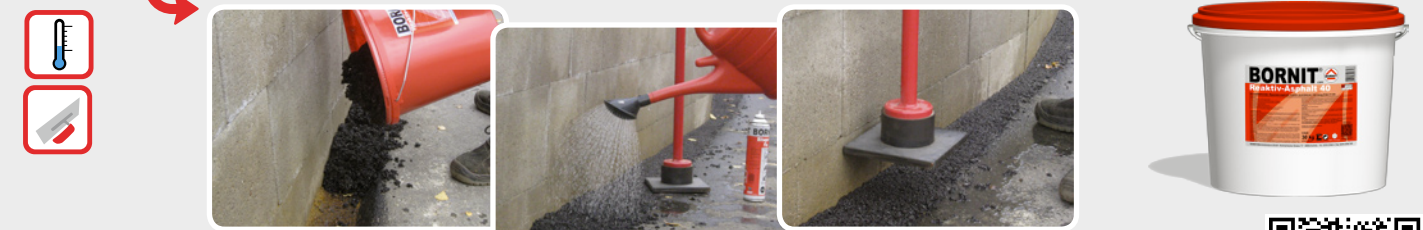
For rehabilitation of cracks (also overseas banding) in asphalt and concrete surfaces:



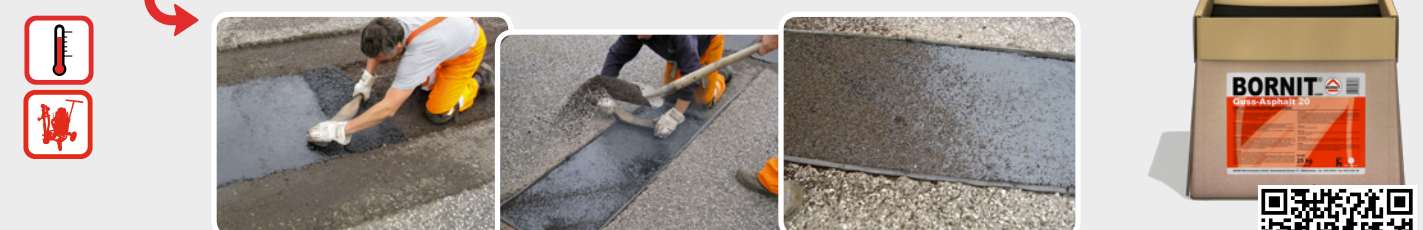
**BORNIT®-Crack Compound H** - polymer bitumen-based crack repair compound, very good stability at high temperatures and excellent cold elasticity, rehabilitated traffic areas may be traversed directly after cooling of the compound.



For repair work on asphalt and concrete surfaces:



**BORNIT®-Reactive Asphalt 40 / 80** - cold mixes reactively curing with water, layer thicknesses up to 50 mm, repaired surfaces immediately traversable following application and compaction; no subsequent compaction by rolling traffic required – very well suited for repairs of driveways, pavements and parking lots.



**BORNIT®-Mastic Asphalt** - hot workable repair compound; application for layer thicknesses up to 30 mm, immediately traversable following cooling, no subsequent compaction by rolling traffic required.



For repair work on asphalt surfaces:

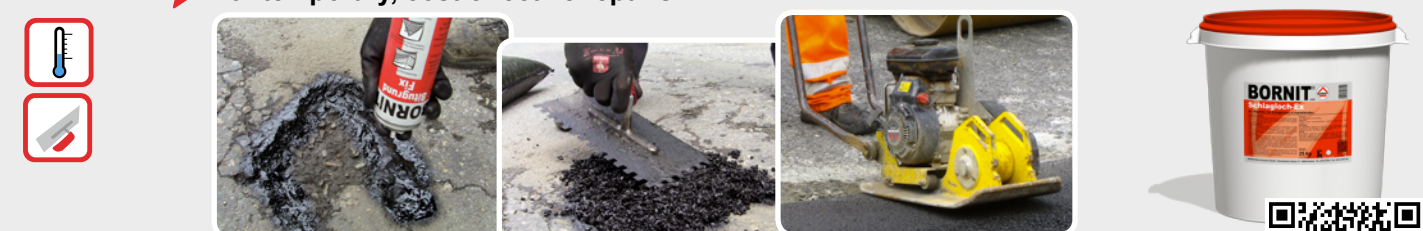
For long-lasting repairs



**BORNIT®-Asphalt-Fix** - cold mixes usable for layer thicknesses up to max. 50 mm, subsequent compaction by rolling traffic not necessarily required, in its cured state performance characteristics like hot mixes.



For temporary, cost-effective repairs



**BORNIT®-Coldmix Asphalt** - cold workable repair compound for asphalt roads; subsequent compaction by rolling traffic required; not suited for parking lots, driveways as well as pavements and cycle paths.



For the preparation of seams in asphalt road construction:



**BORNIT®-Joint Flex** - highly flexible, stable, solvent-free bitumen compound, applicable down to -5 °C; fast, machine-aided application with BORNIT®-Flexomat 3.0.



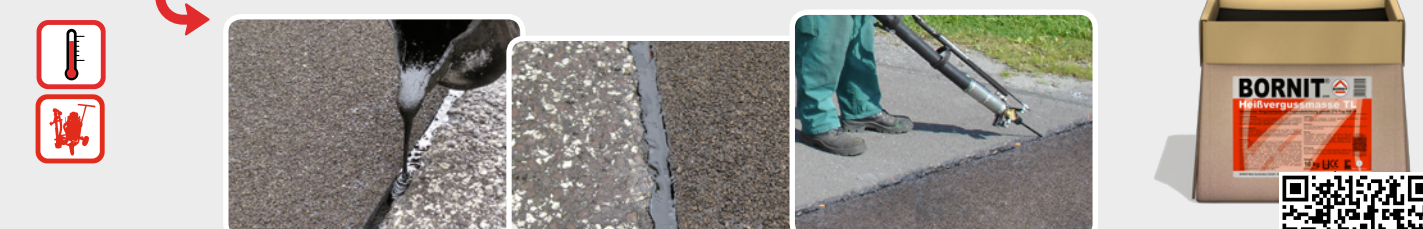
For the preparation of connections and seams in asphalt road construction:



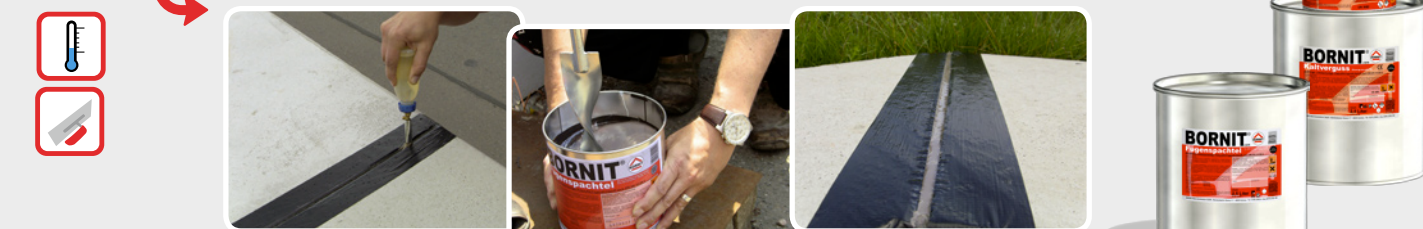
**BORNIT®-Joint Tape** - flexible and meltable polymer-modified bitumen joint tape, high inherent tack, in connection with BORNIT®-Easy Primer FB, the joint tape also adheres very well at the flank surfaces without flame heating.



For sealing joints in concrete and asphalt surfaces:



**BORNIT®-Hot Sealing TL / BORNIT®-Hot Sealing PS** - hot (max. 180 °C) workable, bitumen-based polymer sealing compound. Priming with BORNIT®-Hot Compound Primer.



**BORNIT®-Cold Sealing Compound / BORNIT®-Cold Joint Sealant** - 2-component polysulfide joint sealing materials, weather- and aging-resistant; BORNIT®-Cold Sealing Compound (self-levelling) for horizontal joints or BORNIT®-Cold Joint Sealant (stable) for vertical and inclined joints, respectively. Priming with BORNIT®-Concrete or Asphalt Primer.

